

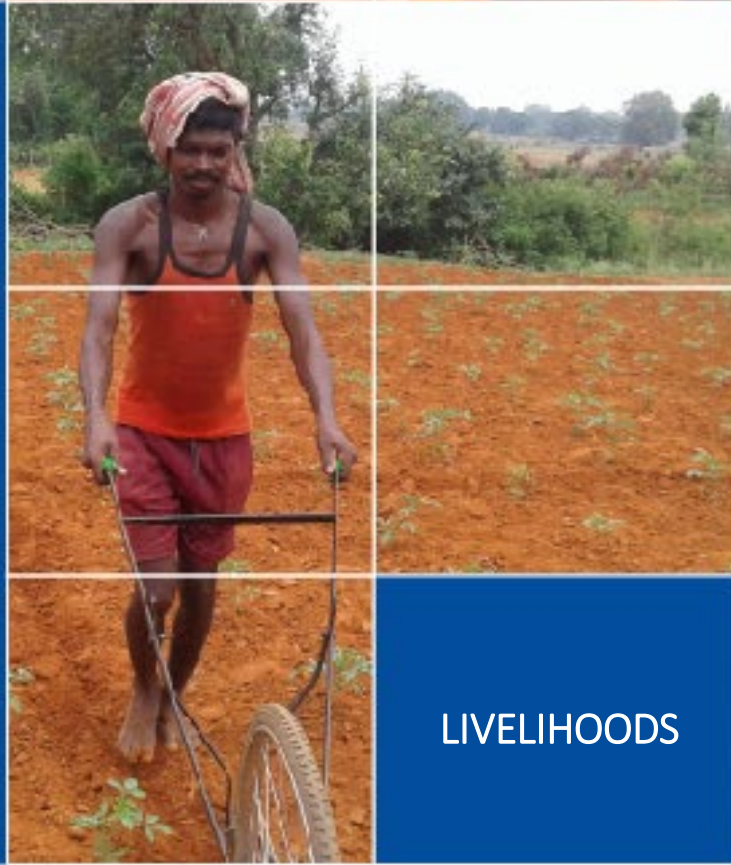
WOMEN
EMPOWERMENT



 **EdelGive**
Foundation
An Edelweiss Initiative

Believe.
Build.
Broaden.

EdelGive
Foundation



LIVELIHOODS



EDUCATION

CSR Annual Action Plan 2022-23

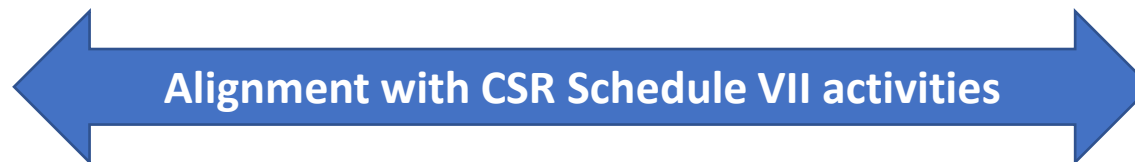
Edelweiss Housing Finance Limited

- Total CSR allocation by EHFL for 2022-23 is INR 17.24 lakhs
- The funds will be used across portfolios of **Education**



Education

(ii) Promoting education and enhancing vocation skills, especially among children





Education

This portfolio works to improve access, retention and quality of education by working with systems, schools, students and communities across 5 states in India.



Agastya International Foundation

Agastya uses innovative modes like Mobile Science Labs, Lab in a Box, Innovation Hubs and others to help students engage with STEM subjects in Maharashtra and West Bengal., benefiting 1,70,000 students to date.



LeapForWord (LFW)

'The English Literate Maharashtra' program trains local teachers to adopt English learning solutions tailored for regional language ecosystems, across all 36 districts of Maharashtra .



The Collaborators for Transforming Education (CTE)

CTE is a coalition of government, NGOs and philanthropy aiming to improving learning outcomes in government schools in the state of Maharashtra. The program supports capacity building of government functionaries, learning and review processes and community engagement to ensure sustainable change.



Initiated in 2016, the CTE covered 1.4 million children across 7 districts of Maharashtra by 2020. The CTE is implemented by three partners, [Gyan Prakash Foundation \(GPF\)](#), [Kaivalya Education Foundation \(KEF\)](#) and [Quality Education Support Trust \(QUEST\)](#)



kshamtalaya

Kshamtalaya

The 'School Transformation Program' works with teachers and communities on achieving excellence in execution of critical school processes, benefiting students, teachers and parents in Delhi and Rajasthan.



Sshrishti India Trust

Sshrishti Trust runs learning centres in slums in Delhi that help over 400 children holistic early years learning and transition to mainstream schools each year.



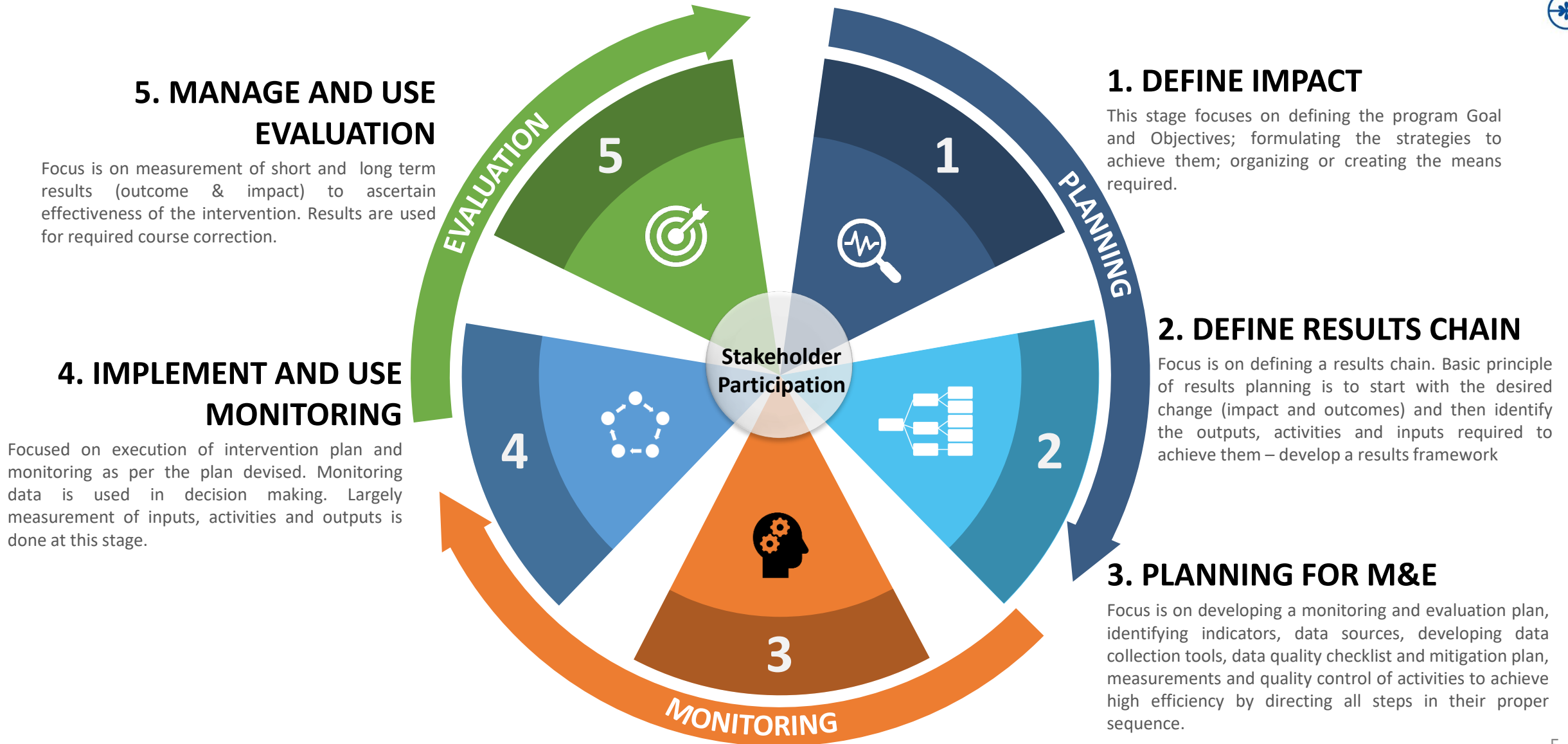
South Orissa Voluntary Action (SOVA)

SOVA supports accessible and good-quality pre-primary and primary education and strengthened child rights protection in 62 villages of tribal-majority Koraput district in Odisha.



Samaritan Help Mission (SHM)

The schools run by Samaritan Help Mission enables access to low-cost, good quality education for 5,000 underprivileged students of Tikiapara slum in Howrah, West Bengal.





EdelGive Foundation

Women Empowerment * Education * Livelihoods

Thank You